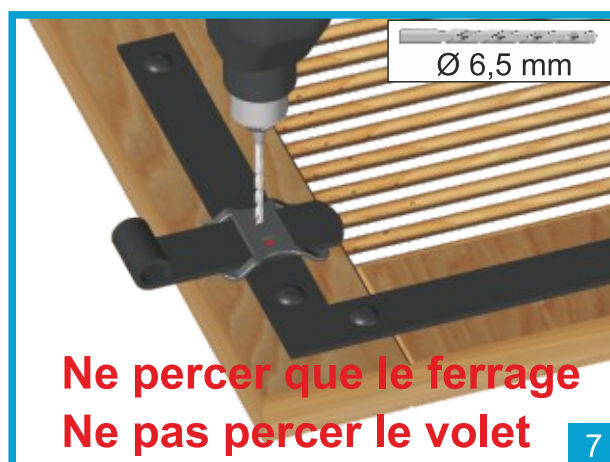
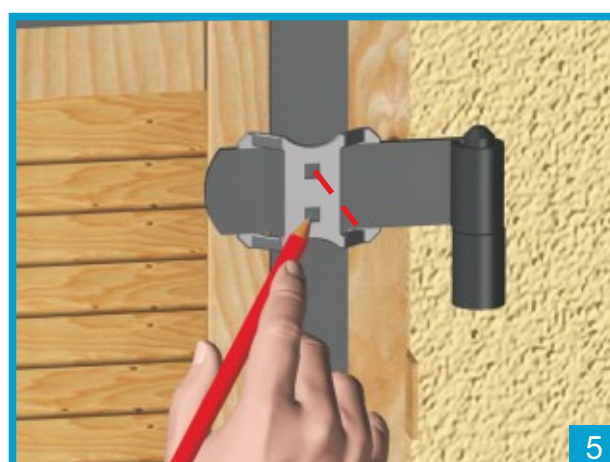
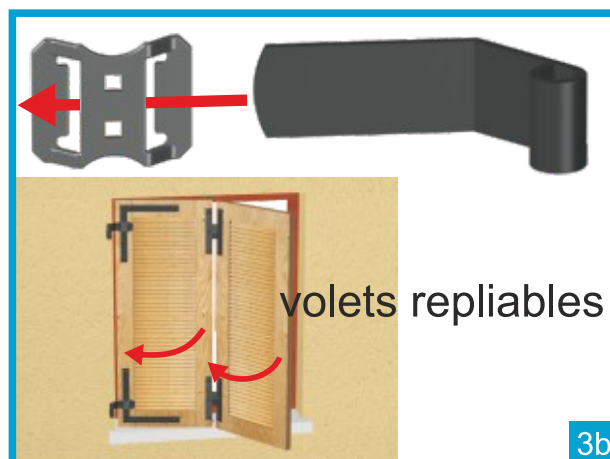
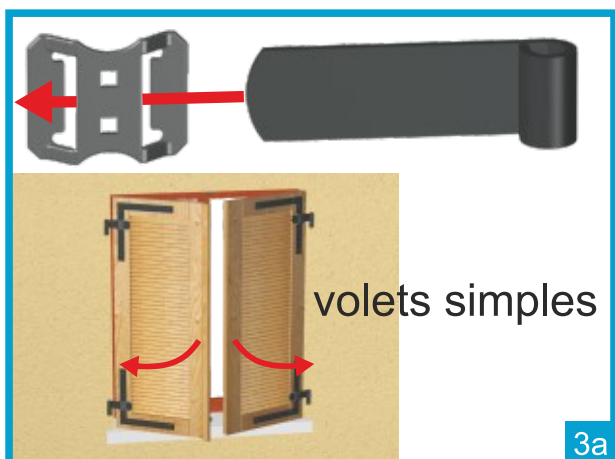
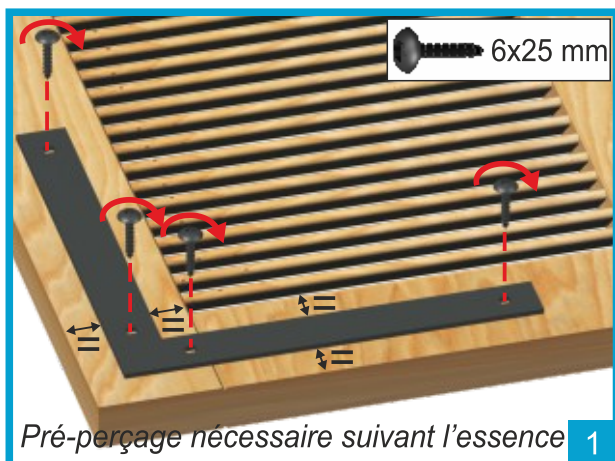


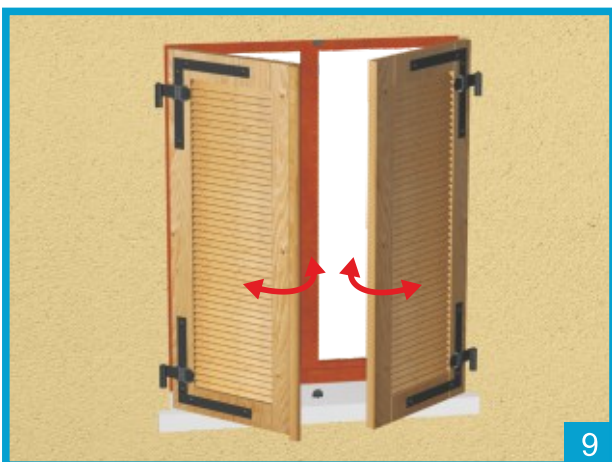
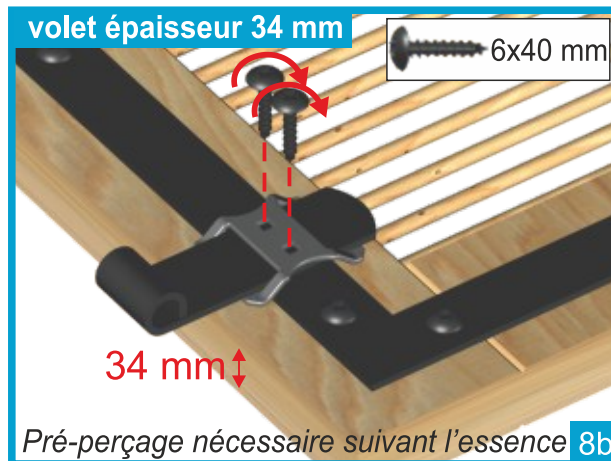
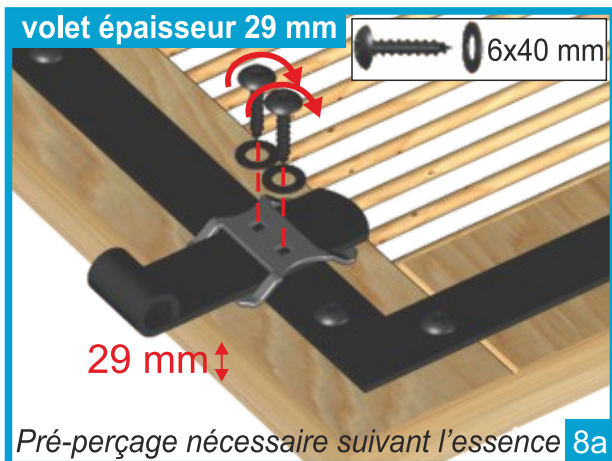
## Les volets persiennés bois Ferrage en fourniture

Mise en place des volets battants.....	page 2
Fixation de l'organe de liaison pour volets repliables.....	page 3
Mise en place des butées.....	page 4
Pose des crochets de rappel pour volets repliables.....	page 4

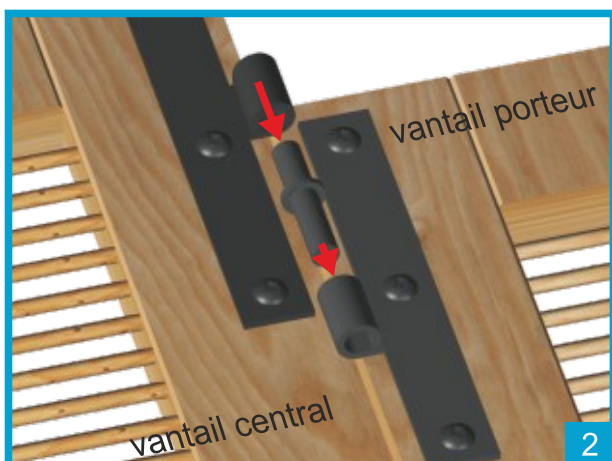
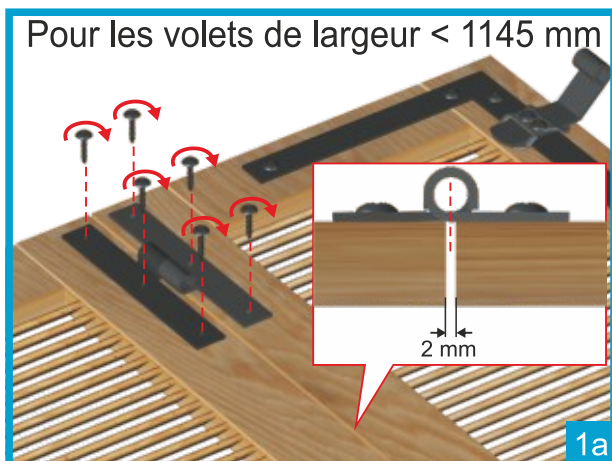


# Mise en place des volets battants

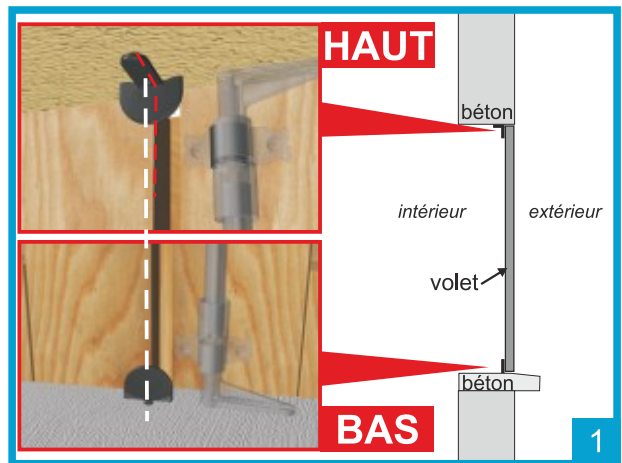




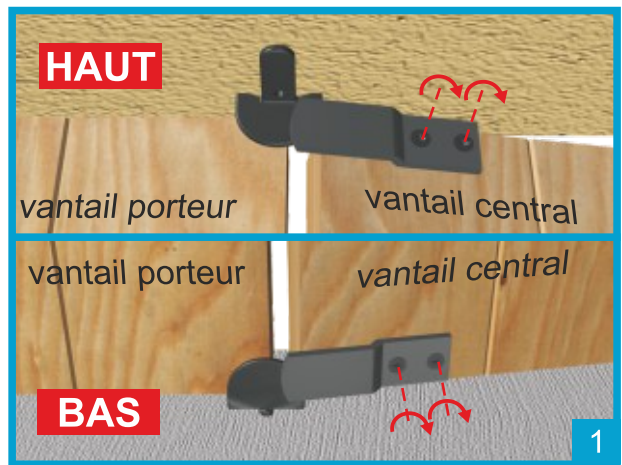
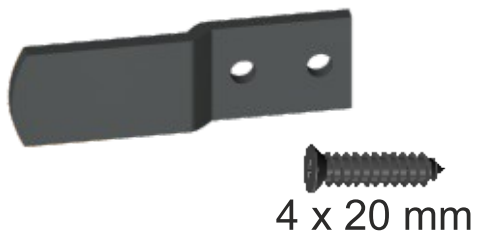
## Fixation de l'organe de liaison pour volets repliables



### Mise en place des butées



### Pose des crochets de rappel pour volets repliables



Cas d'un 2 vantaux à gauche

*Pour répondre à la norme 13659, les vis-pentures doivent être rendues indémontables après la pose*